

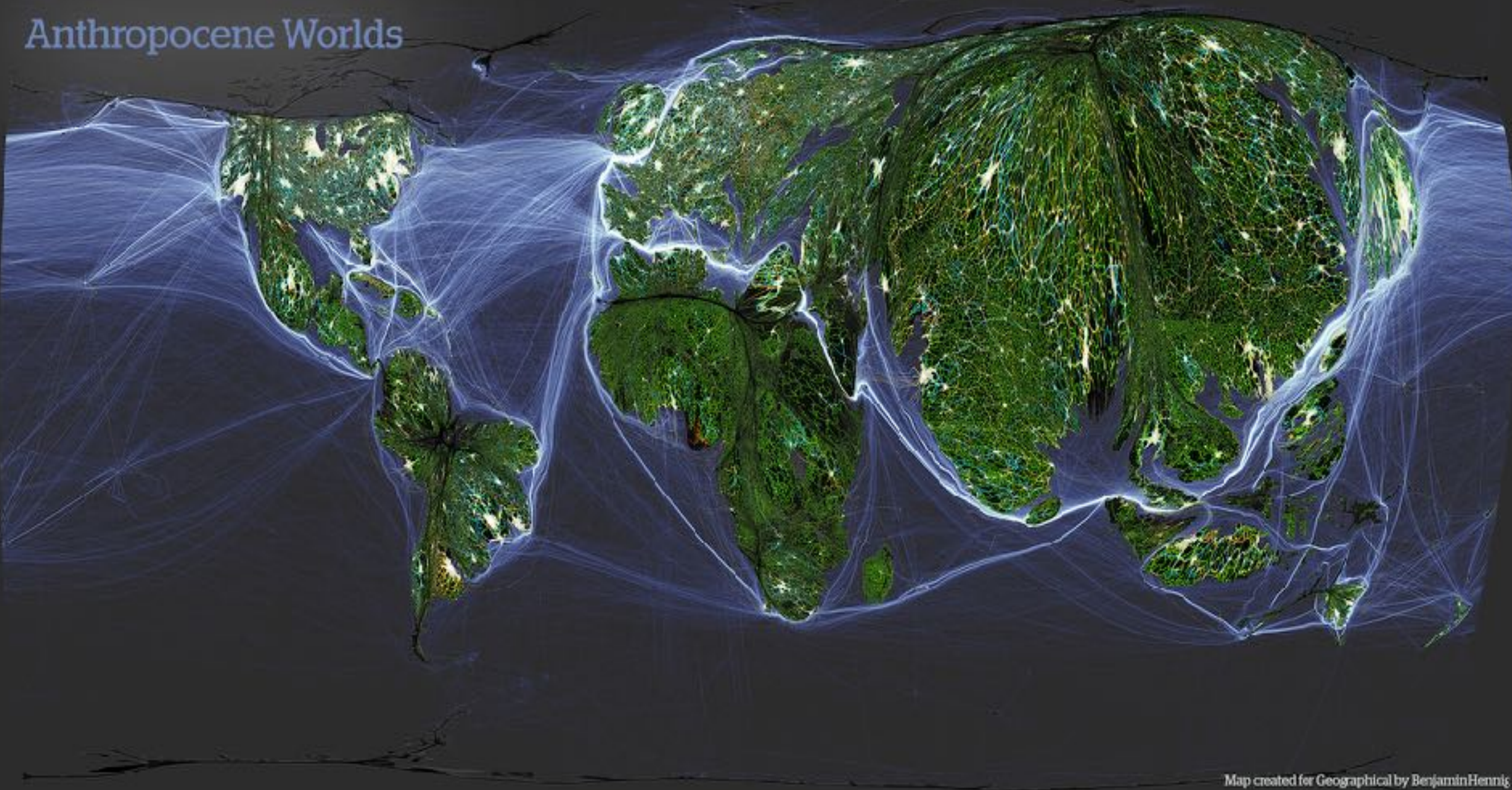


**Villes, Services, Données  
L'hyper proximité  
urbaine et territoriale**

**CARLOS MORENO**

Professeur associé Université Paris1 - Panthéon Sorbonne – IAE Paris  
Directeur Scientifique Chaire ETI

# Anthropocene Worlds



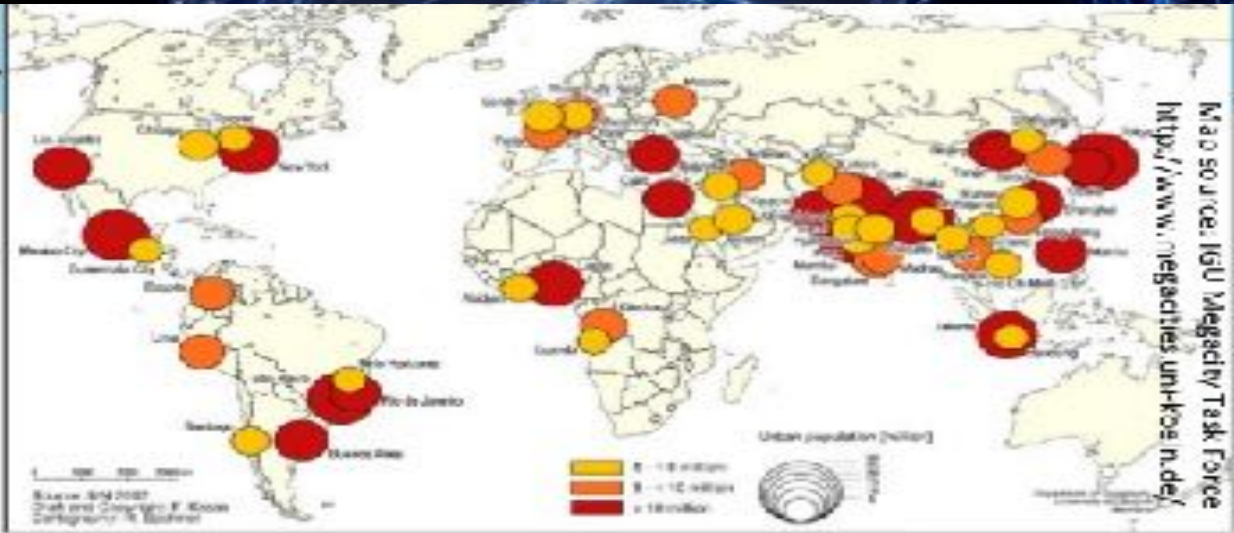
Map created for Geographical by Benjamin Hennig

[www.viewsoftheworld.net](http://www.viewsoftheworld.net)

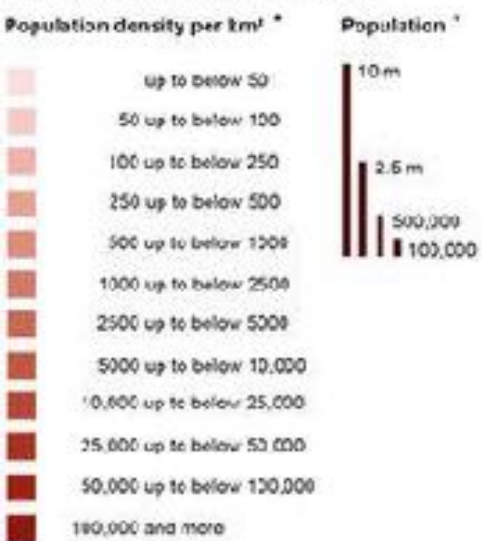
# GLOBAL CITIES



Parameters based on UN Figure:



# Population in cities and municipalities with more than 1000 inhabitants



\* Total Population in cities with more than 1000 inhabitants per 10 km<sup>2</sup> of raster surface  
† Latest data available for the period 2012 - 2017

Database: Spatial Monitoring System for Europe  
Geonames.org  
Geometric basis: EU GRID ETRS89 LAEA, 10 km  
Author: V. Schmidt-Gelwein, L. Kel

© 2020 Benoit 2017

2030, 750 METROPOLES = 60% WORLD PIB >>> PUB



2015, 139 EUROPEAN CITIES = 44% EUROPEAN GDP

UDP NEW YORK = GDP AUSTRALIA  
UDP LOS ANGELES = GDP NETHERLANDS  
UDP CHICAGO = GDP SWITZERLAND  
UDP SEATTLE = GDP ISRAËL  
UDP TEL AVIV = +54% GDP ISRAËL  
UDP PARIS - ILE DE FRANCE > GDP ARGENTINA



国内生产总值

# Chinese Megaregions compared with Countries

“ For most of the past millennium until the Industrial Revolution, the Yangtze River Delta was the world’s leading economic region, and it has reclaimed its role as a key mega region on the world stage. ”

— WINSTON MOK

**BEIJING—TIANJIN**  
北京天津城市圈



\$1.14T

\$1.13T



**AUSTRALIA**  
澳大利亚

**YANGTZE RIVER DELTA**  
长江三角洲城市群

MAJOR CITIES: SHANGHAI,  
SUZHOU, HANGZHOU, WUXI,  
NANTONG, NINGBO,  
NANJING, CHANGZHOU



\$2.62T

\$2.31T



**ITALY**  
意大利

**PEARL RIVER DELTA**  
珠江三角洲城市群

MAJOR CITIES: GUANGZHOU  
SHENZHEN, HONG KONG,  
FOSHAN, DONGGUAN, MACAO



\$1.89T

\$1.83T

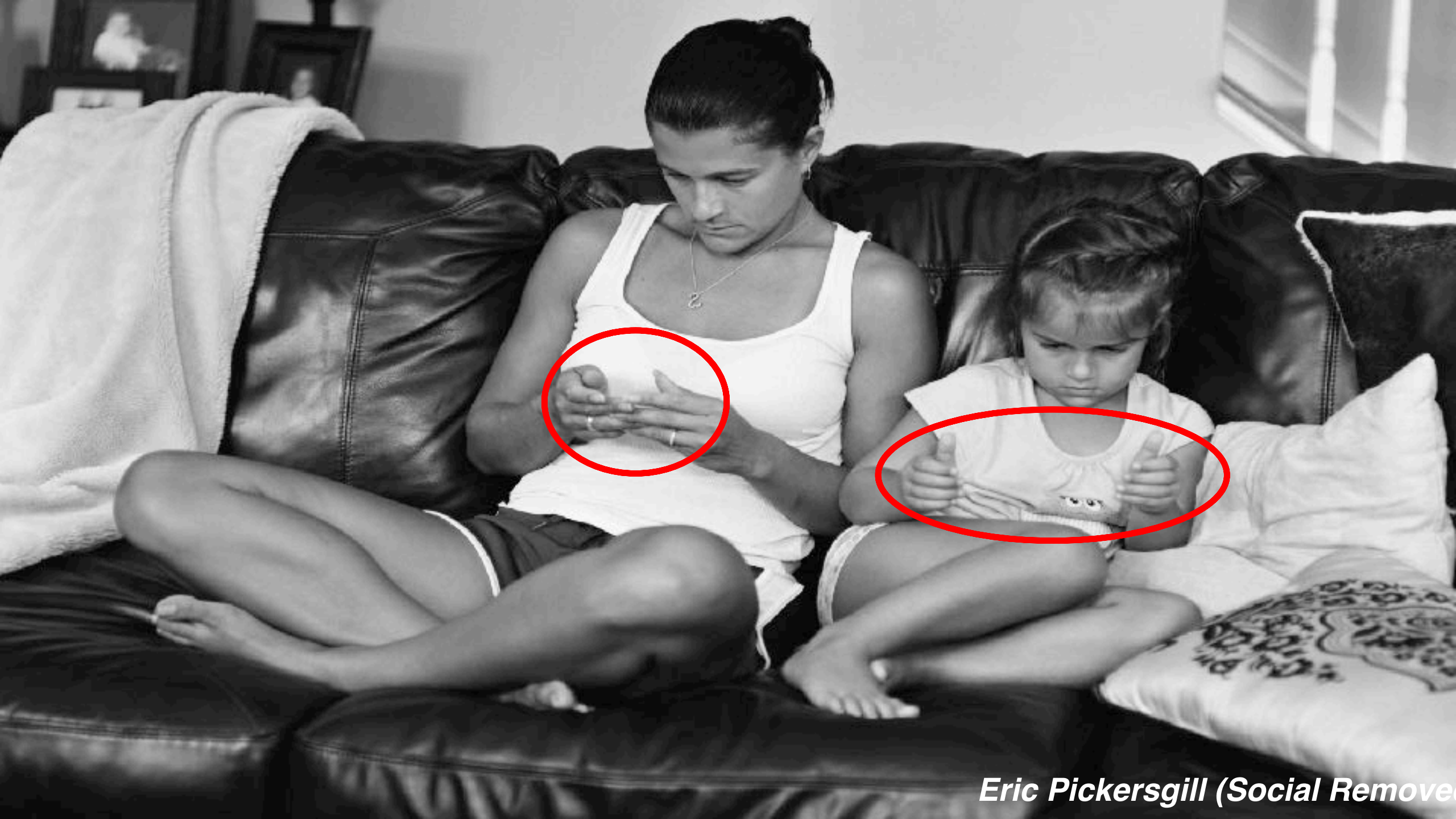


**KOREA**  
韩国

2014





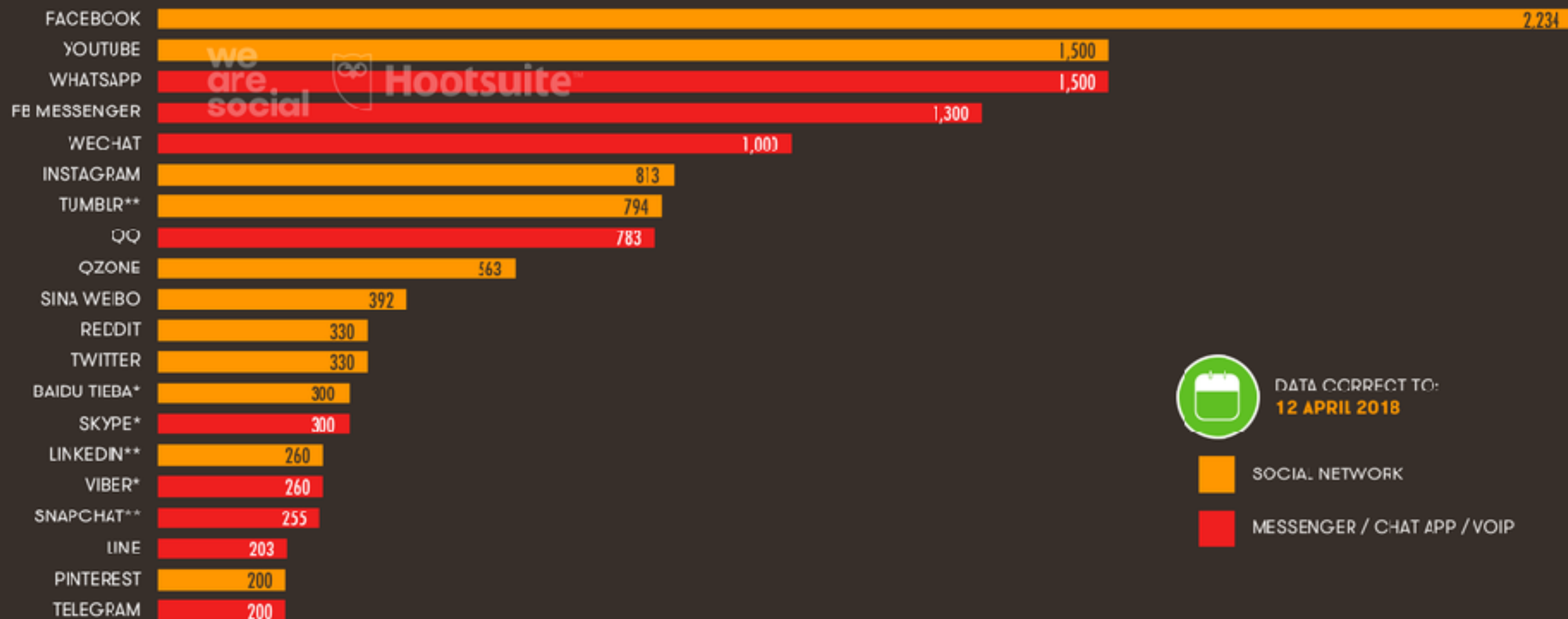


*Eric Pickersgill (Social Remove)*

APR  
2018

# ACTIVE USERS OF KEY GLOBAL SOCIAL PLATFORMS

BASED ON THE MOST RECENTLY PUBLISHED MONTHLY ACTIVE USER ACCOUNTS FOR EACH PLATFORM, IN MILLIONS



DATA CORRECT TO:  
12 APRIL 2018



SOCIAL NETWORK



MESSENGER / CHAT APP / VOIP

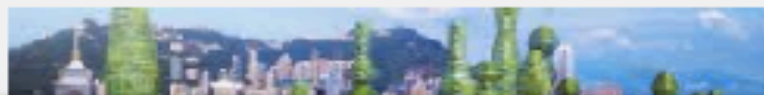
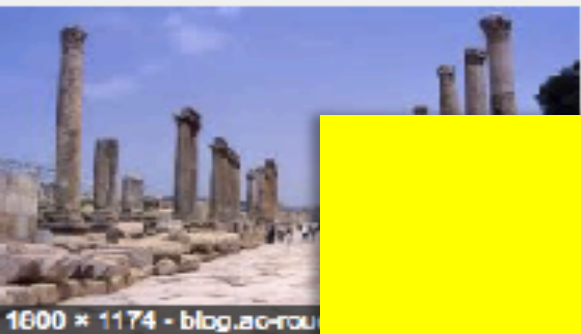
1984  
Orwell

**We  
Are  
Here**

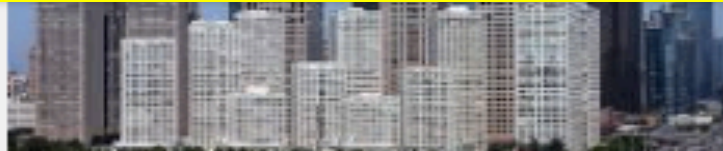
Fahrenheit 451  
Bradbury

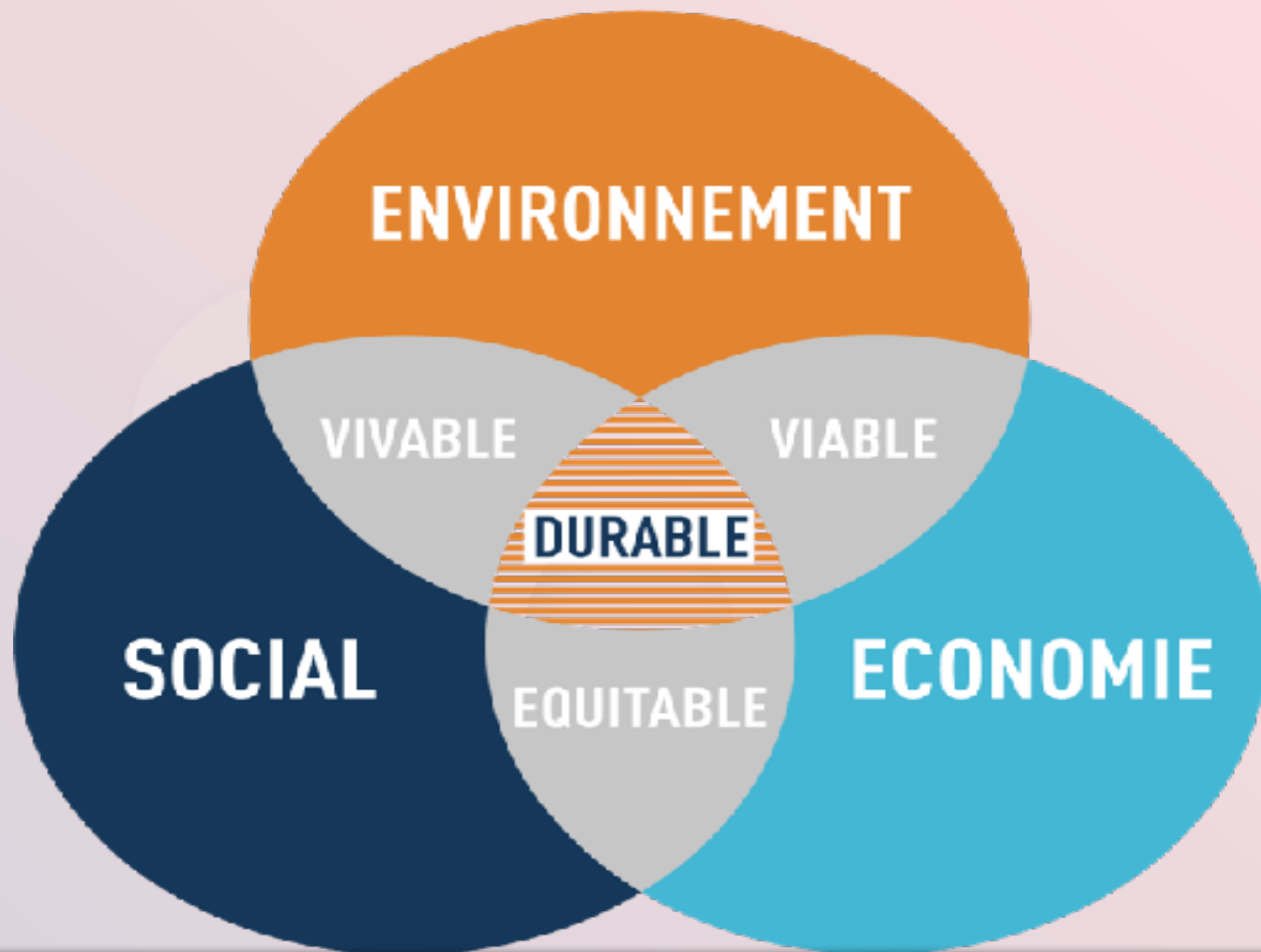
Brave new world  
Huxley

The invention of Nature  
Humboldt



# Métabolisme urbain

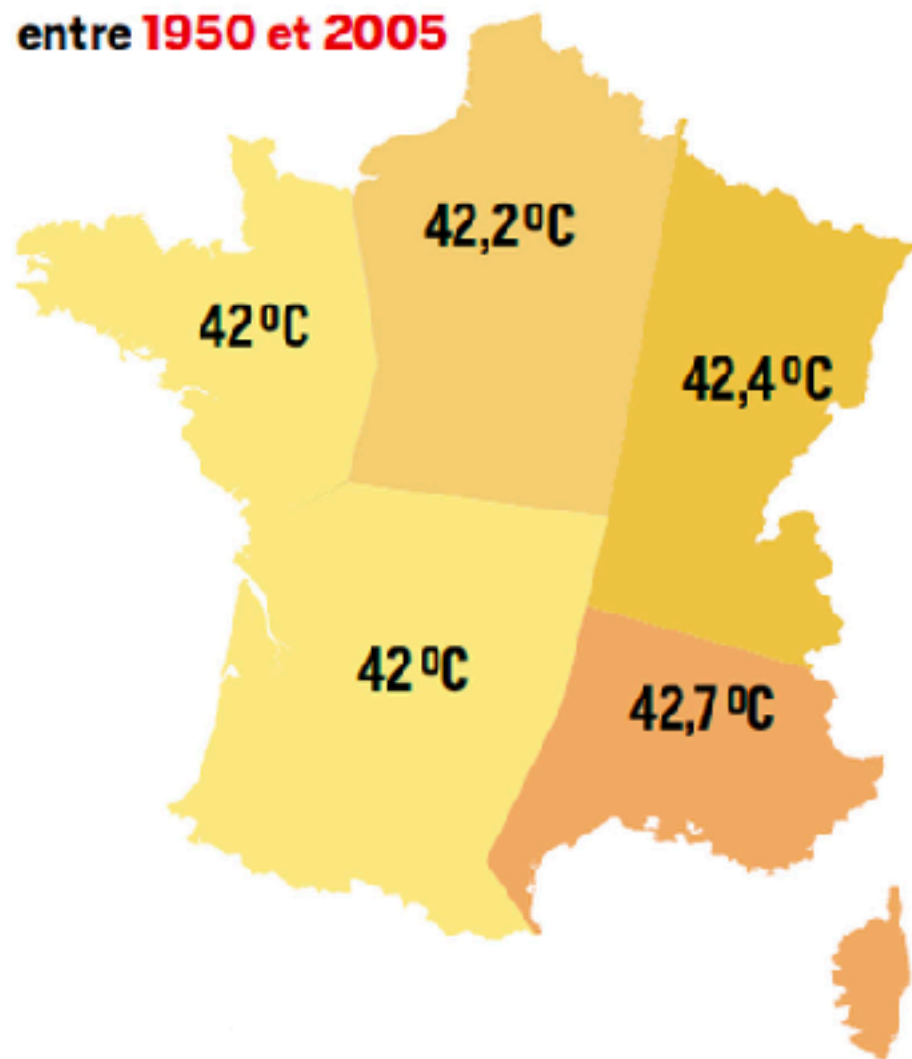




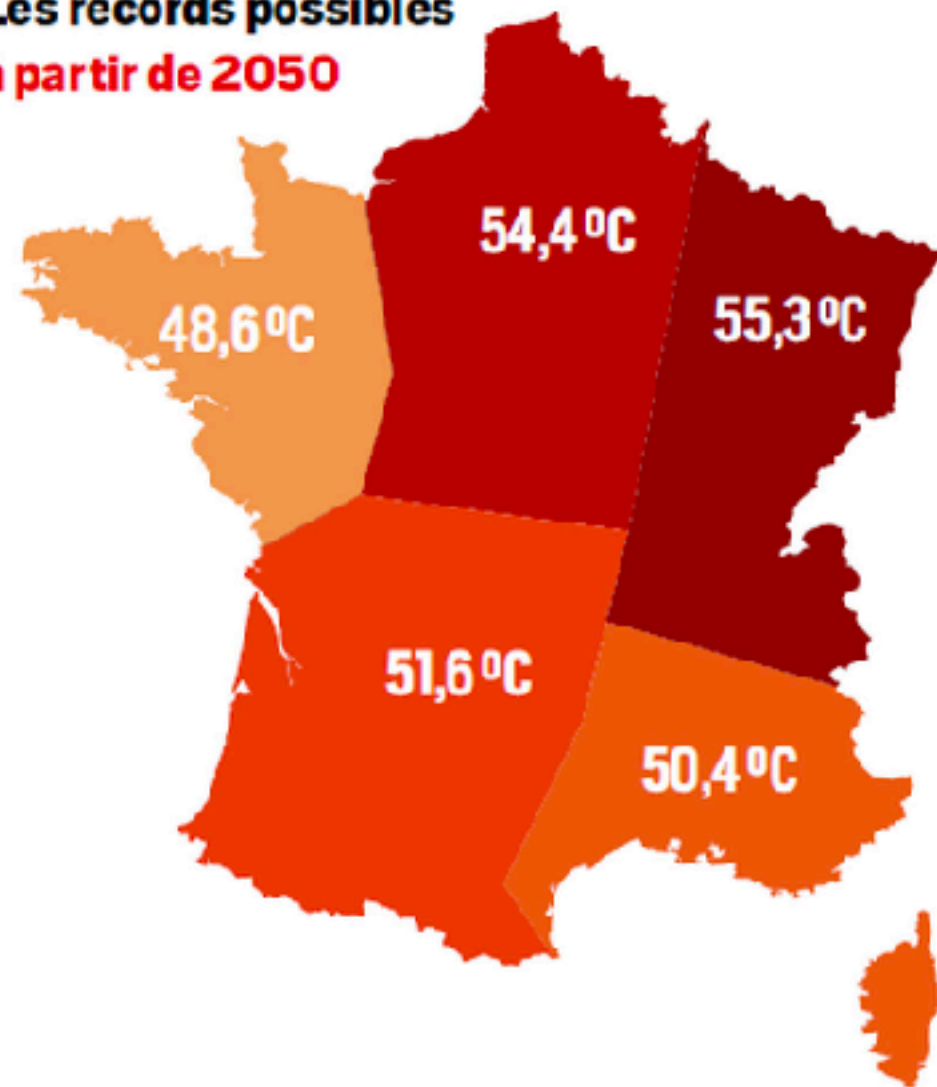
L'ENJEU DE CREATION DE VALEUR



Les records observés  
entre 1950 et 2005



Les records possibles  
à partir de 2050





LUTTE CONTRE LA PAUVRETÉ





LUTTE CONTRE L'EXCLUSION



Changer de  
paradigme !



# Qualité de Vie

INCLUSION SOCIALE

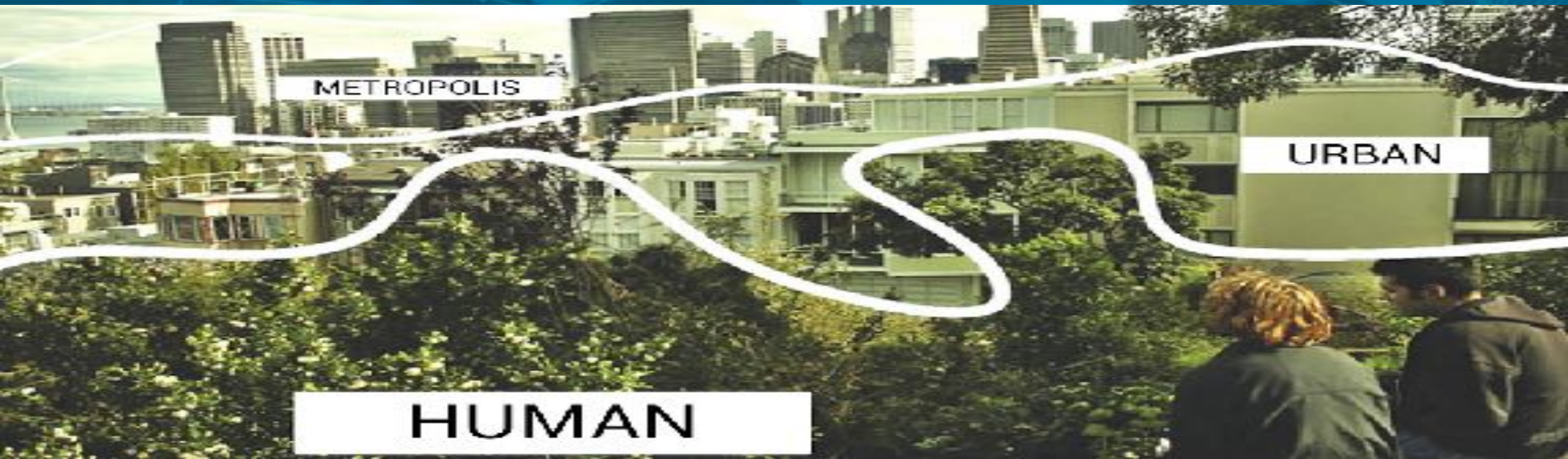
INNOVATION  
TECHNOLOGIQUE

RE INVENTION URBAINE

METROPOLIS

URBAN

HUMAN





Anchorage  
2071

Reykjavik

New York  
2045

**NOW IS  
THE TIME  
TO ACT!**

Deadline 2020

San Francisco  
2049

Honolulu  
2043

Mexico City  
2031

Orlando  
2044

Bogotá  
2031

Beijing  
2046

Tokyo  
2041

Shanghai  
2034

Bangkok  
2046

Manokwari,  
Indonesia  
2020

Jakarta  
2029

Rio de Janeiro  
2050

Pretoria  
2043

Santiago  
2043

Perth  
2042

Source : Nature, 2013



**LINK BETWEEN AIR POLLUTION & HEART DISEASE**

➤ In 2004, the American Heart Association issued a scientific statement concluding exposure to air pollution contributes to cardiovascular illness and mortality

➤ Pollution particles smaller than 2.5 microns are tiny enough to enter the body, irritate the lungs and blood vessels around the heart



➤ Over time, these pollutants reportedly aggravate or increase the process of disease in the arteries

➤ Short-term exposure can increase the risk of heart attack, stroke, arrhythmias and heart failure in susceptible people, such as the elderly or those with pre-existing medical conditions



"Lunch was delicious. Pollution was disgusting. Notice how dark it was. This photo was taken at noon."  
Hangzhou 2006  
(From a private blog)



**EL AUSTRAL**  
EL DIARIO DE LA ARAUCANÍA

**Temuco es la ciudad con peor contaminación del aire en América Latina**



**Demand for action over motorway air pollution**

POLLUTED communities next to the M1 in Sheffield have made a renewed call for action to tackle emissions levels.

The East End Quality of Life Initiative, which represents some 20,000 residents, has taken out after new research showed a link between exposure to air pollution and heart attacks.

Neighbourhoods close to the motorway experience spikes in pollution during rush hours.

A report by the Journal of the American Medical Association looked at 31 studies comparing the risk of a heart attack at various levels of traffic-related industrial and traf-

fic-related air pollutants including carbon monoxide, nitrogen dioxide and small soot-like particles.

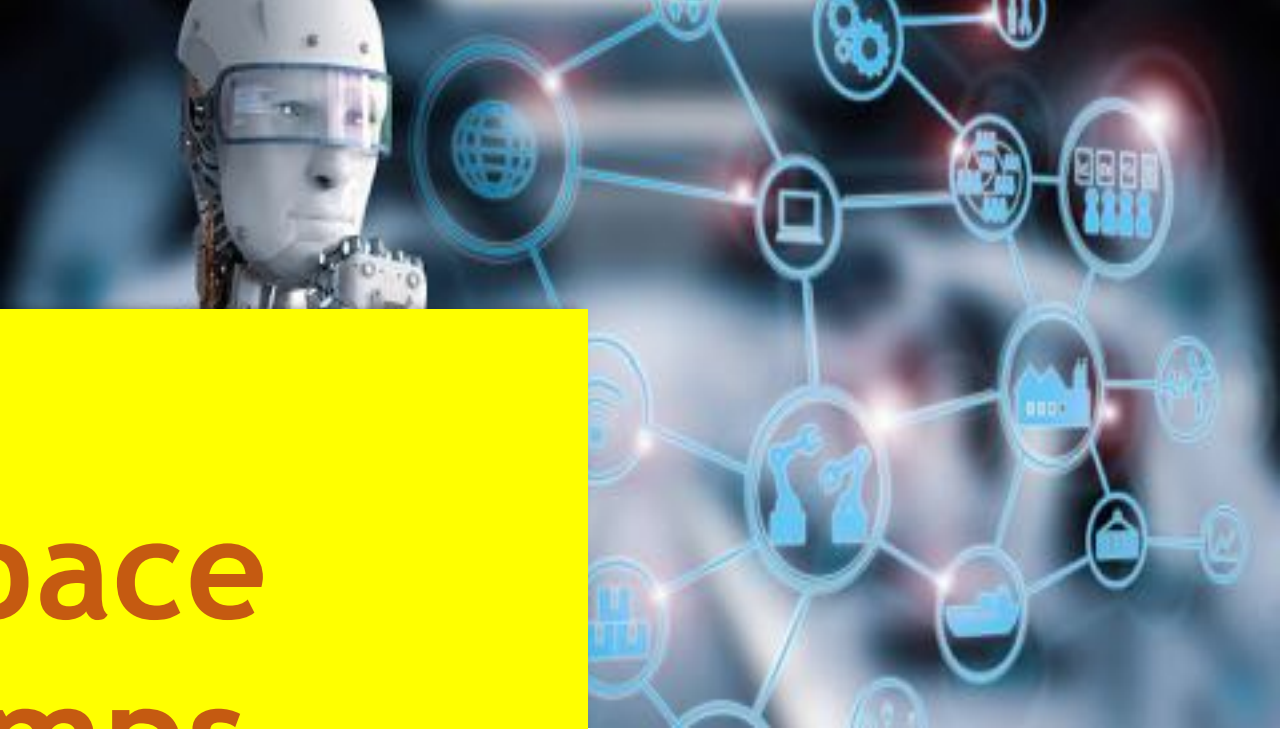
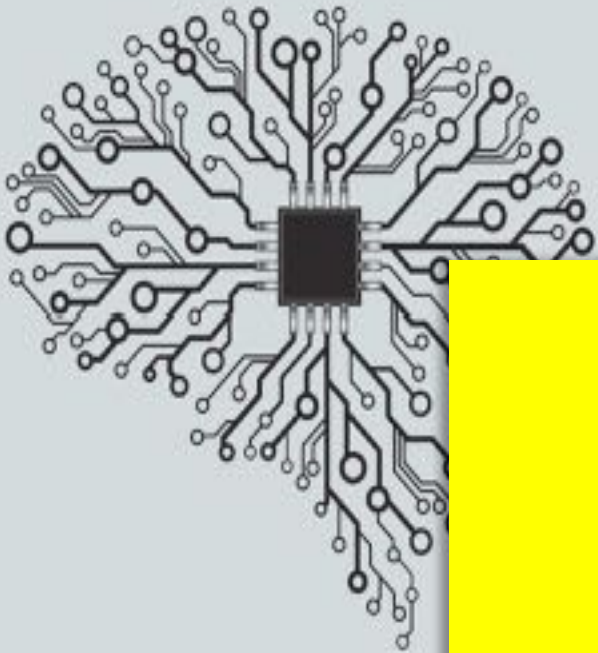
It said: "For most of the pollutants, an increase in concentration of 10 micrograms per cubic metre of air - the typical standard used to assess harm, and barely noticeable to a person breathing the air - was associated with a 1.8 per cent increase in the chance of having a heart attack in the next week."

Neil Funnell, said: "This is more evidence of the need to cut pollution in and around Tinsley and the rest of the city. The most vulnerable in our communities are worst affected."



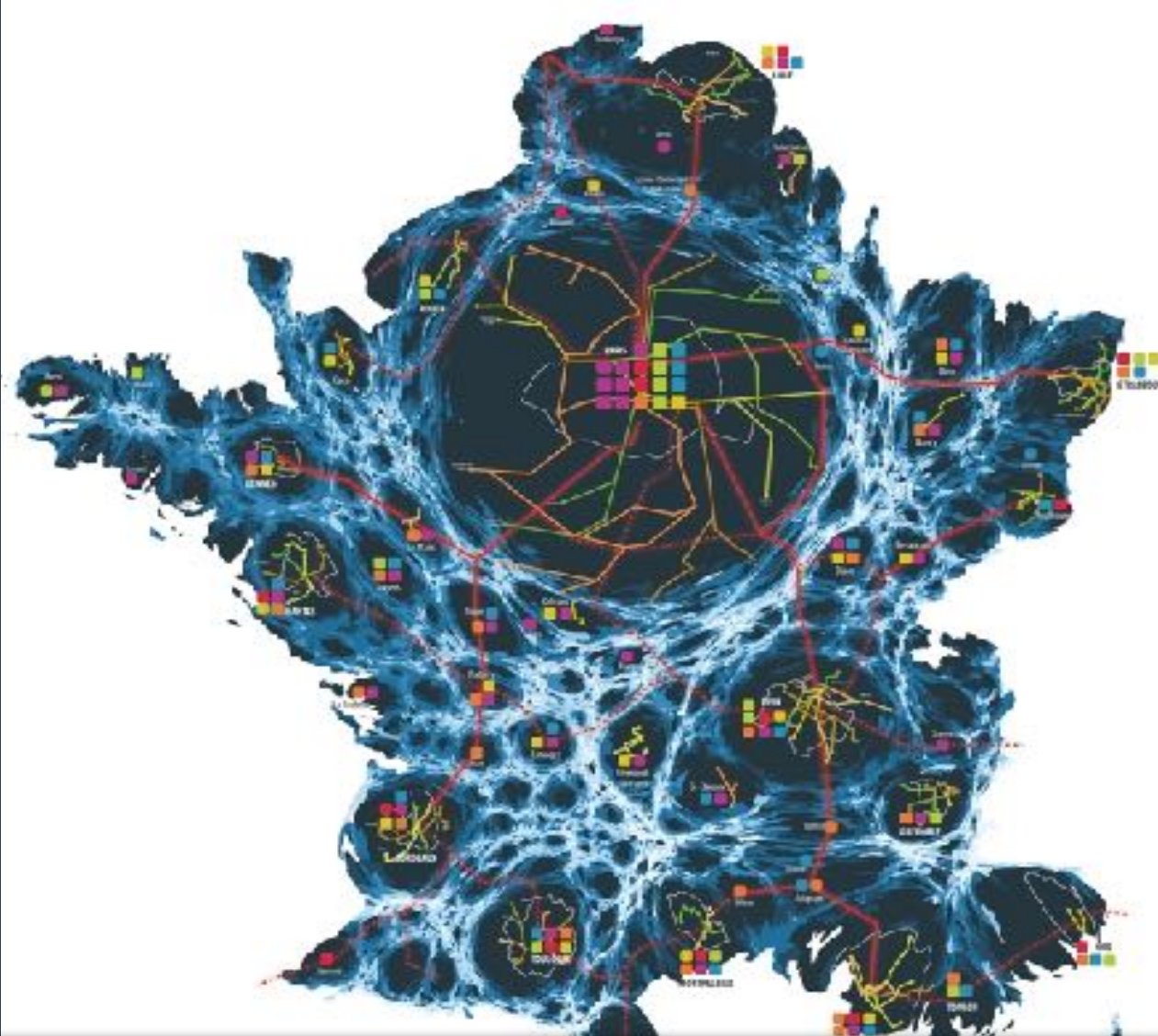






**Espace  
Temps  
Silence**





# RÉINVENTER LES SOLIDARITÉS TERRITORIALES

The background of the slide is a photograph of an outdoor setting. In the foreground, there are green trees and foliage. In the mid-ground, a large, modern building with a glass facade is visible, partially obscured by the trees. The sky is bright and clear. The overall scene suggests a park or a public space in an urban environment.

**Réinventer la vie urbaine & territoriale**

**Réappropriation de la nature**

**Réinventer le lien social**

**Réinventer la connectivité servicielle**



# Nouveaux liens de confiance

*OpenData, Blockchain, Crowd,  
Local economy*



# Pour un nouveau chrono urbanisme



La ville du ¼ d'heure

# Fonctions sociales urbaines & Territoriales

## Impacts Potentiels

Habitants

Lieux

Entreprises

Se Loger

Travailler

Se Nourrir

Se Soigner

S'Éduquer

S'Épanouir

## Objectifs Qualité de vie

Inclusion sociale

Développement durable

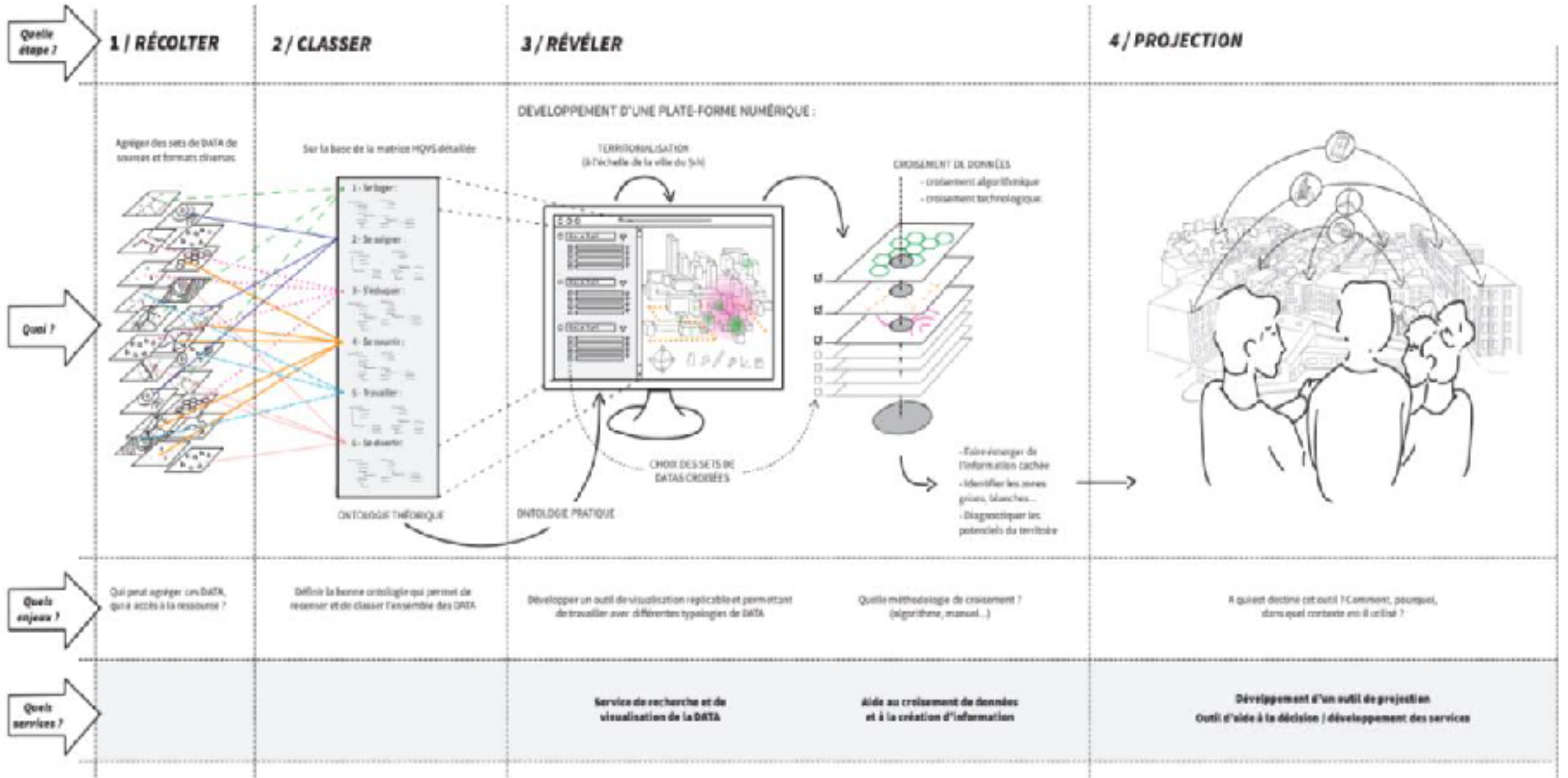
Développement économique

# REPENSER LES FONCTIONS SOCIALES URBAINES ET TERRITORIALES

VILLE DU ¼  
D'HEURE

TERRITOIRE  
½ HEURE







## Livrables attendus

1

Une compilation des données territoriales associées aux fonctions sociales urbaines du territoire

2

Une ontologie urbaine permettant de gérer la classification des informations collectées

3

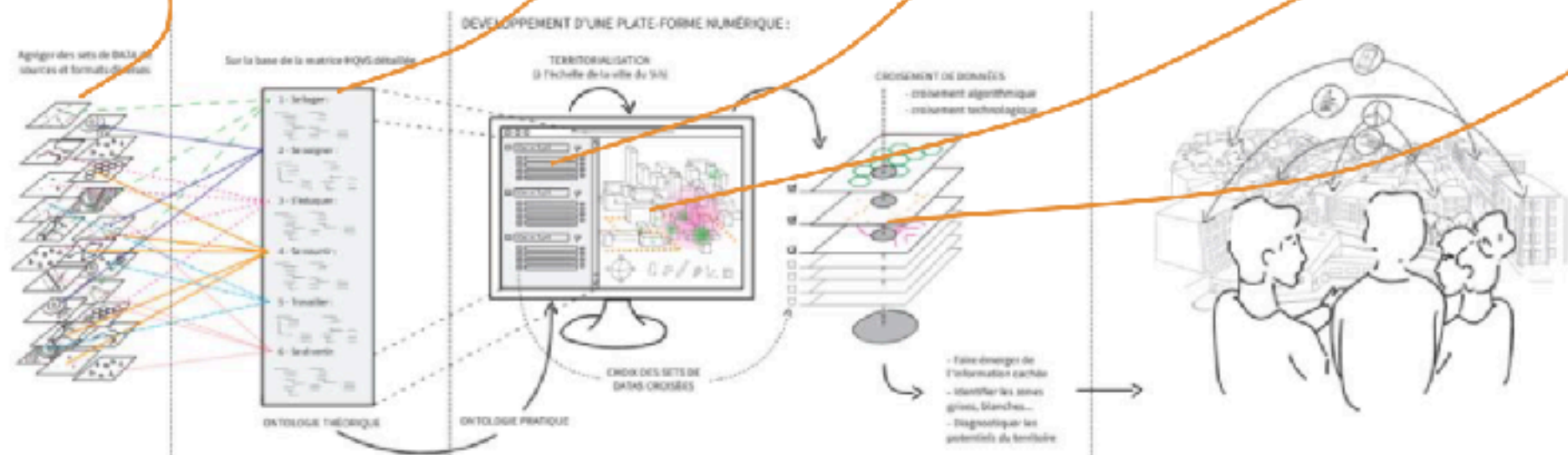
Une plateforme numérique permettant d'assurer la cohérence de l'ensemble

4

Une gestion par la data visualisation des chacune des étapes associées à la méthodologie

5

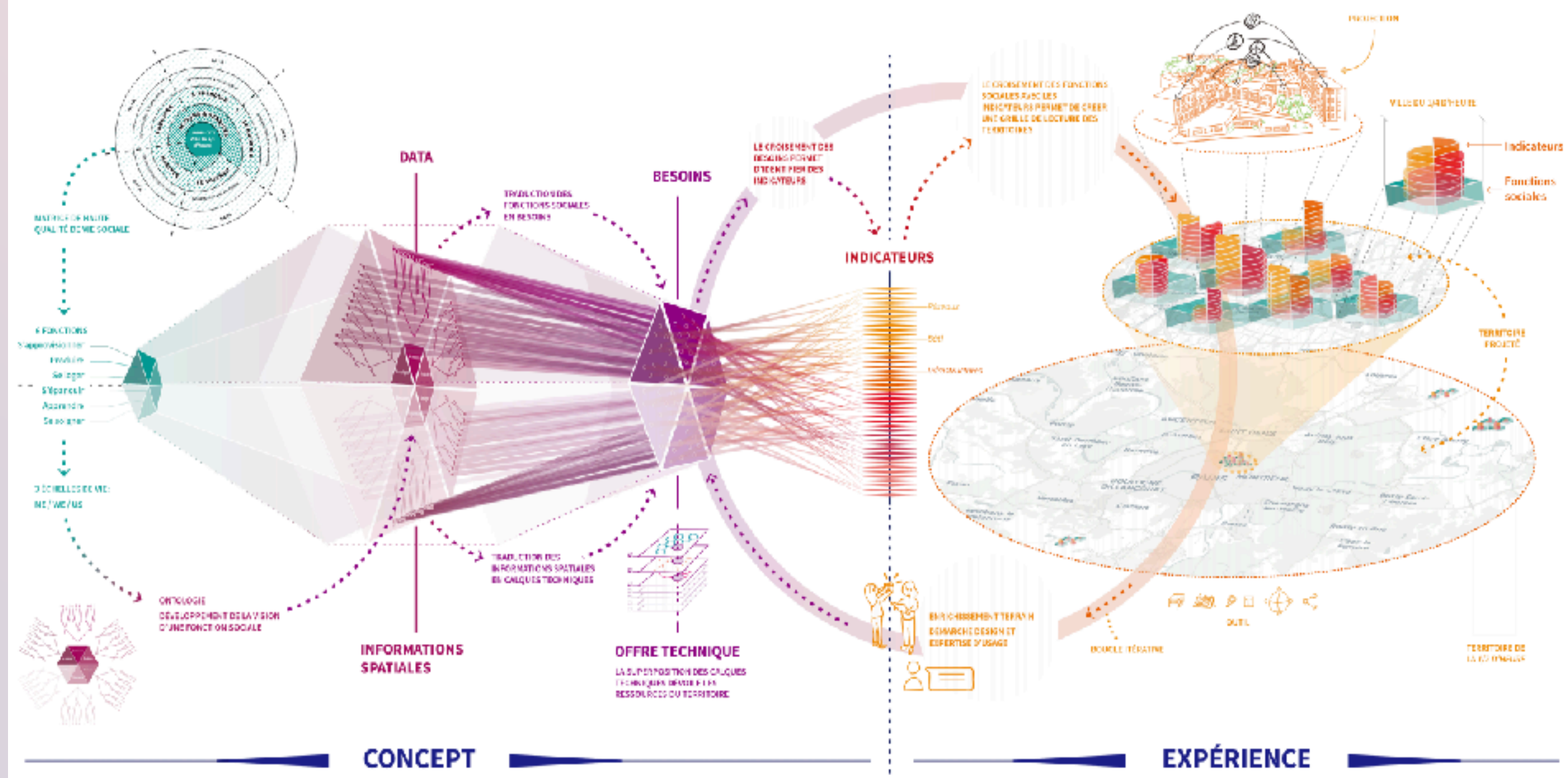
Une méthodologie d'analyse par fonction sociales urbaines et croisement avec le territoire et les états du citoyen



N.B.

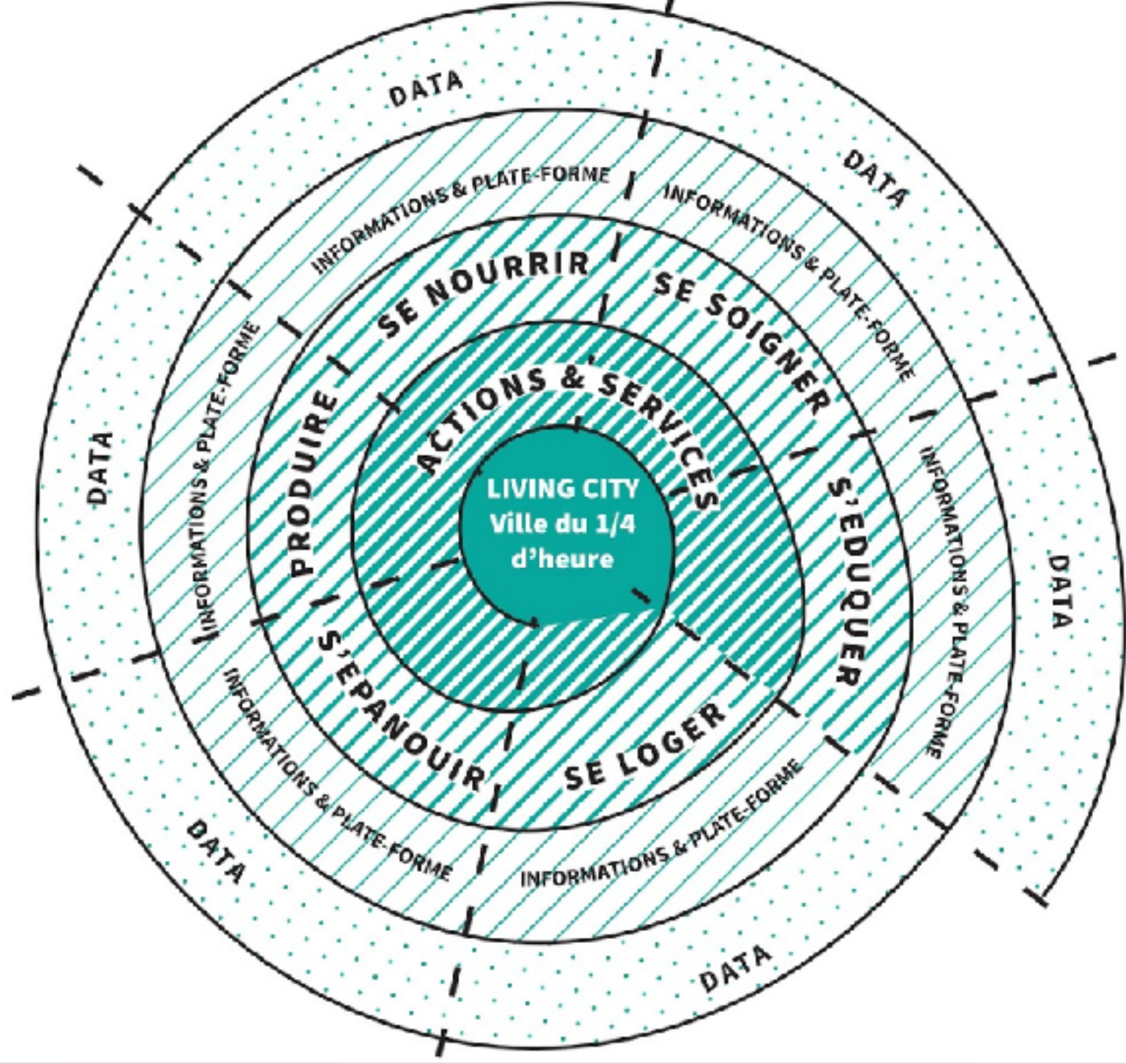
En priorité et à courte terme la phase de check in et diagnostic  
Par la suite, la possibilité de gérer les évolutions dans les temps, vers l'arrière et vers l'avant

# DÉPLOIEMENT DE LA MATRICE HAUTE QUALITÉ DE VIE SOCIALE : VERS UNE GRILLE DE LECTURE DES TERRITOIRES DURABLES



# Réinventer la territorialité d'hyper proximité

---



An aerial photograph of a city with a grid street pattern and a river. The map is overlaid with a yellow line that follows a path through the city. Numerous orange circular markers are scattered across the map, and several purple apple icons are placed at specific points along the yellow path. A large, semi-transparent white circle is positioned on the right side of the image, containing text.

# Comprendre ma territorialité

*DATA, IA & Territorialité*

# Merci

[carlos.moreno@univ-paris1.fr](mailto:carlos.moreno@univ-paris1.fr)  
[www.moreno-web.net](http://www.moreno-web.net)