



**Les défis urbains  
Regard croisé sur les villes**

**CARLOS MORENO**

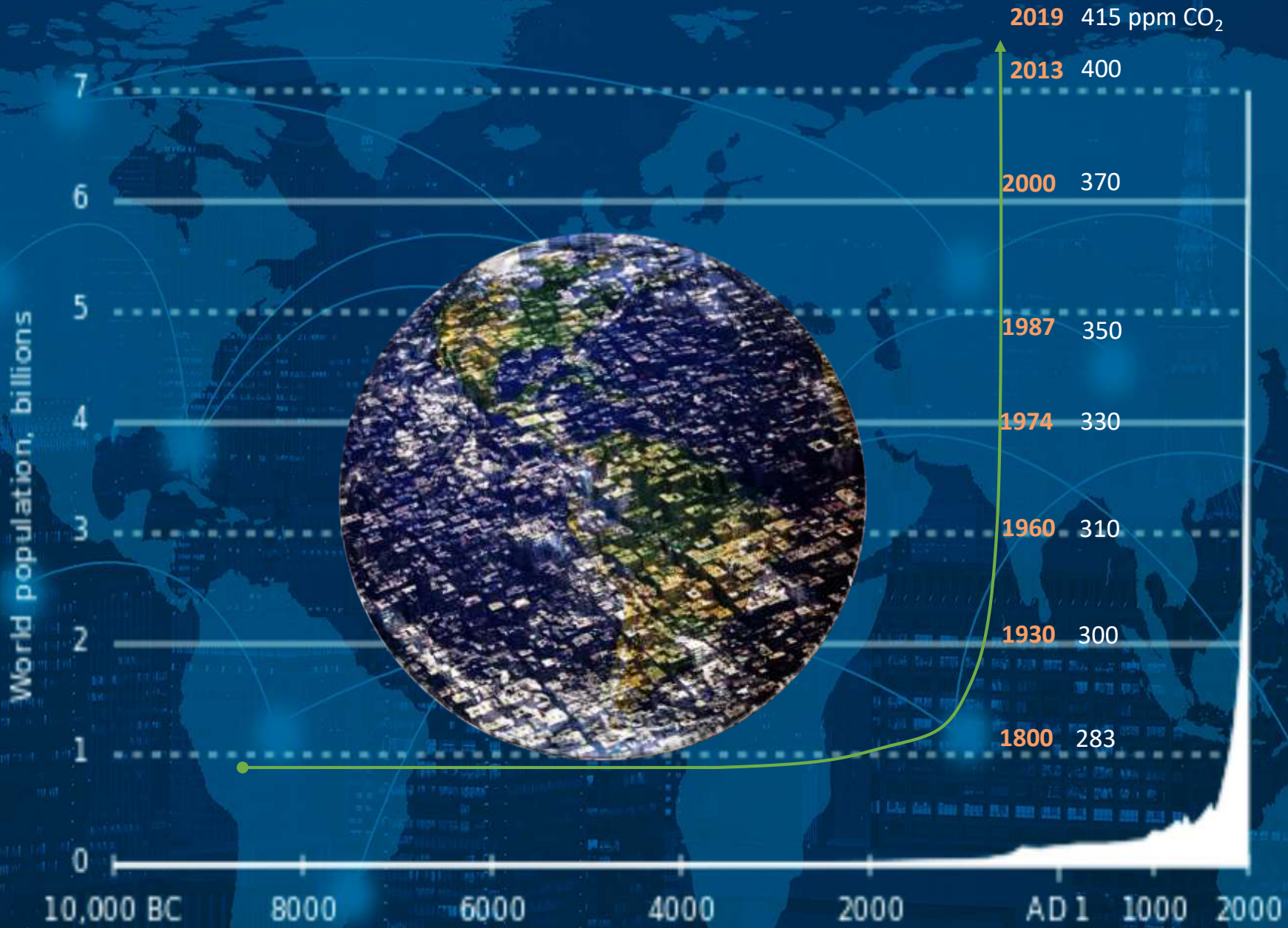
**Professeur Université Paris1 - Panthéon Sorbonne –  
IAE Paris**

**Directeur Scientifique Chaire ETI  
Médaille de la Prospective 2019, Académie  
d'Architecture France**

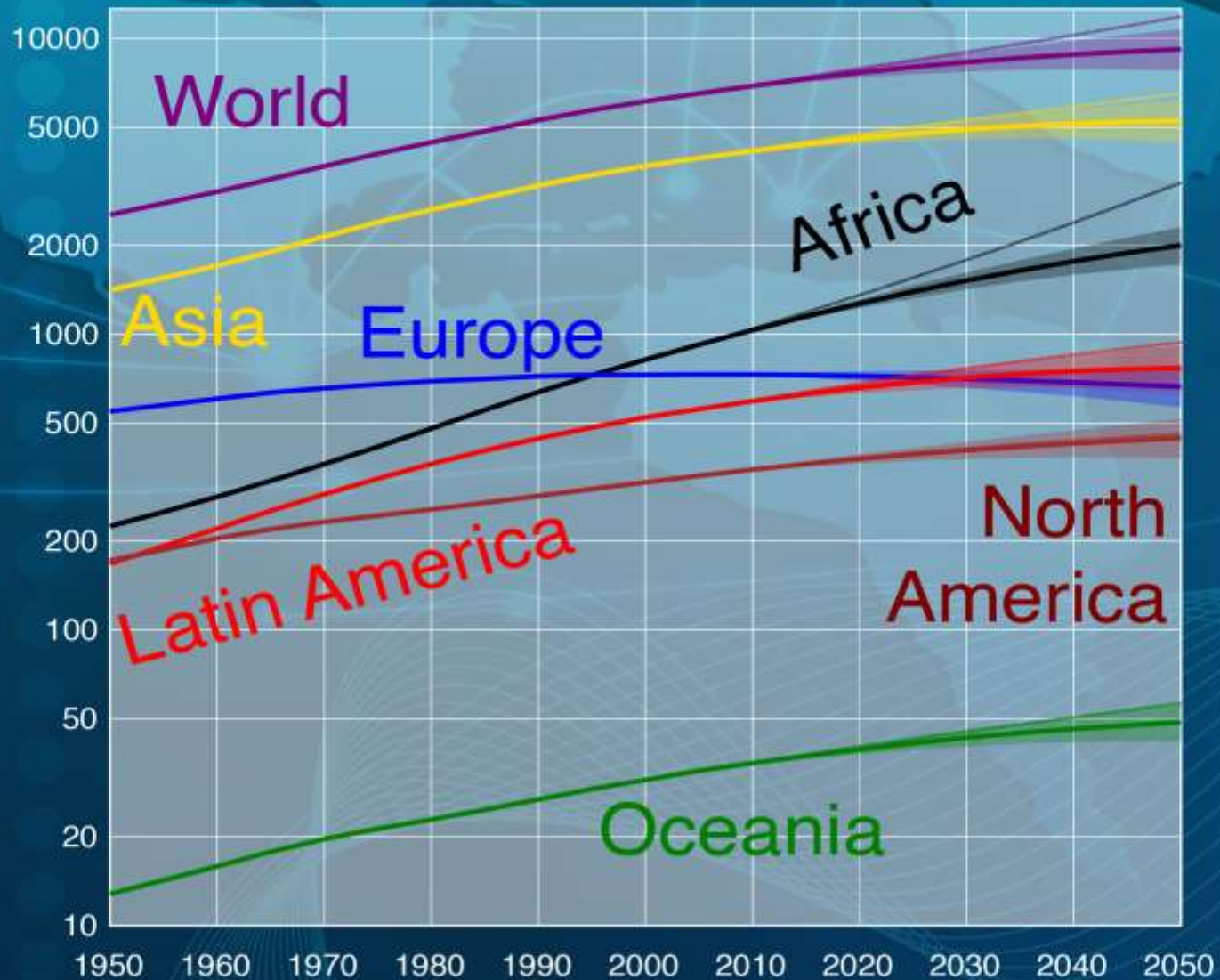




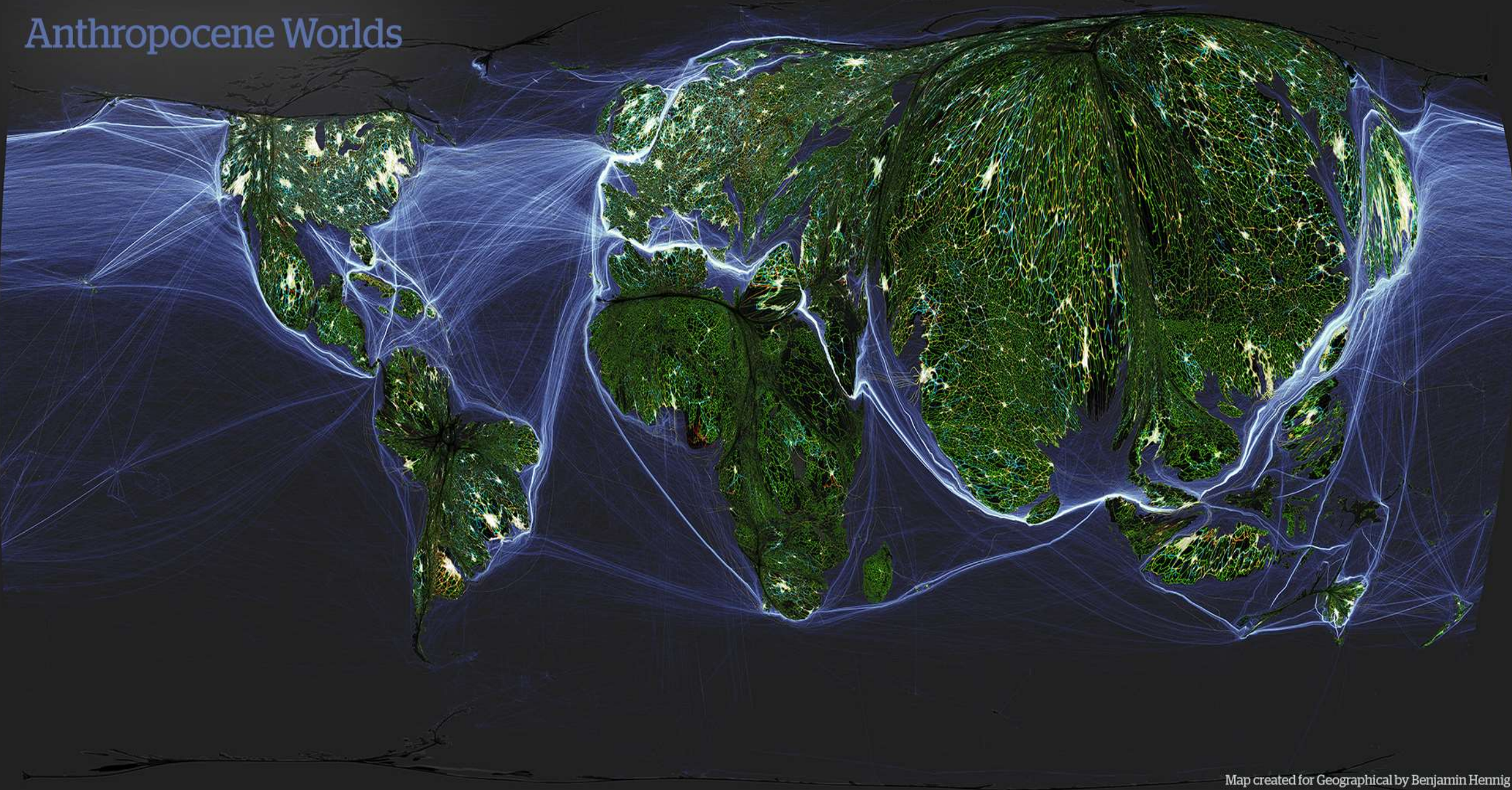




# Zoom 1950 - 2050



# Anthropocene Worlds



2014







*Eric Pickersgill (Social Remove*



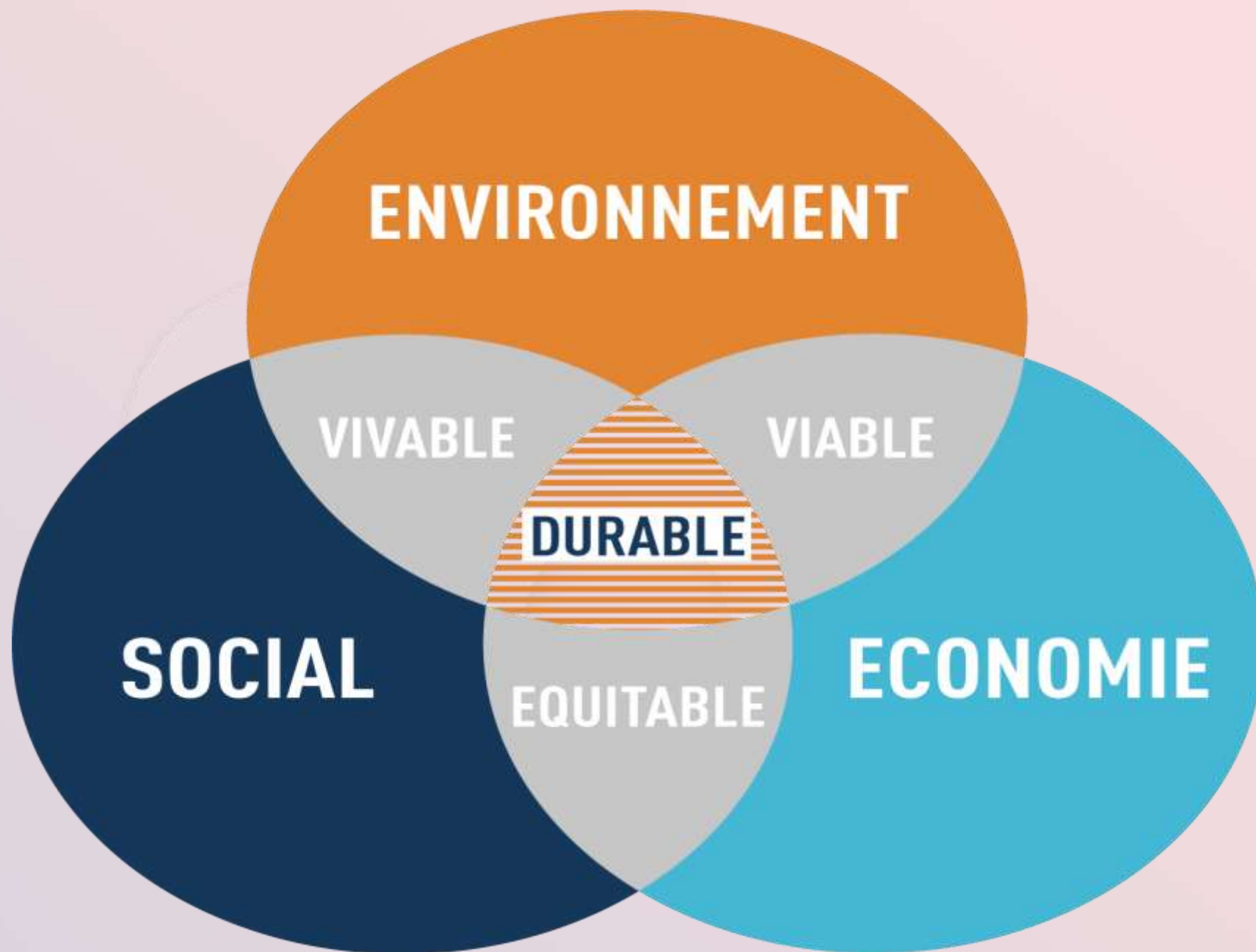
1800 x 1174 - [blog.ac-rouen.fr](http://blog.ac-rouen.fr)

# Métabolisme urbain



# Changer de paradigme !





L'ENJEU DE CREATION DE VALEUR



**LINK BETWEEN AIR POLLUTION & HEART DISEASE**

➤ In 2004, the American Heart Association issued a scientific statement concluding exposure to air pollution contributes to cardiovascular illness and mortality

➤ Pollution particles smaller than 2.5 microns are tiny enough to enter the body, irritate the lungs and blood vessels around the heart



➤ Over time, these pollutants reportedly aggravate or increase the process of disease in the arteries

➤ Short-term exposure can increase the risk of heart attack, stroke, arrhythmias and heart failure in susceptible people, such as the elderly or those with pre-existing medical conditions



"Lunch was delicious. Pollution was disgusting. Notice how dark it was. This photo was taken at noon."  
Hangzhou 2006  
(From a private blog)



**EL AUSTRAL**  
EL DIARIO DE LA ARAUCANÍA  
[www.australtemuco.cl](http://www.australtemuco.cl)

**Temuco es la ciudad con peor contaminación del aire en América Latina**



**Demand for action over motorway air pollution**

POLLUTED communities next to the M1 in Sheffield have made a renewed call for action to tackle emission levels.

The East End Quality of Life Initiative, which represents areas around Tinsley and Darnall, has spoken out after new research showed a link between exposure to air pollution and heart attacks.

Neighbourhoods close to the motorway experience spikes in pollution during rush hours.

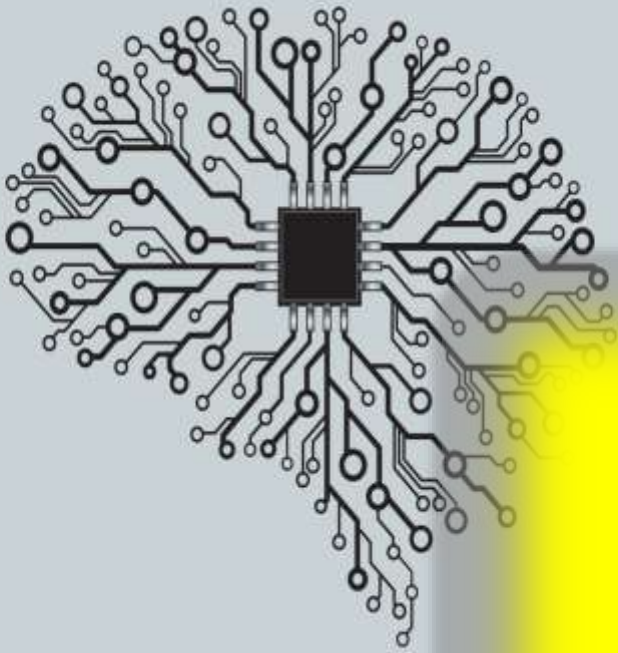
A report by the Journal of the American Medical Association looked at 34 studies comparing the risk of a heart attack at various levels of inhaling industrial and traf-

fic-related air pollutants including carbon monoxide, nitrogen dioxide and small soot-like particles.

It said: "For most of the pollutants, an increase in concentration of 10 micrograms per cubic metre of air – the typical standard used to assess harm, and barely noticeable to a person breathing the air – was associated with a 1-3 per cent increase in the chance of having a heart attack in the next week."

Neil Parry, of the quality of life initiative, said: "This is more evidence of the need to cut pollution in and around Tinsley and the rest of the city. The most vulnerable in our communities are worst affected."





**Espace  
Temps  
Silence**







**Réinventer la vie urbaine & territoriale**  
**Liens de confiance**

**Réappropriation de la nature**

**Réinventer le lien social**

**Réinventer la connectivité servicielle**



# Pour un nouveau chrono urbanisme



La ville du  $\frac{1}{4}$  d'heure  
Territoire de la  $\frac{1}{2}$  heure



# Vivante ma ville ?

## ¿Vivante ma ville ?

**Merci**

**carlos.moreno@univ-paris1.fr**

**[www.moreno-web.net](http://www.moreno-web.net)**